

MODEL N-60, N-60B, N-60M & N-60X Belt Scale Speed Sensors



N-60, N-60B, N-60M & N-60X



The **Model N-60, N-60B, N-60M and N-60X** belt scale speed sensors are designed to monitor the speed of a moving conveyor belt by sending a frequency to the Bulk Pro Systems Model 6101T belt scale integrator.

The N-60, N-60B, N-60M and N-60X belt scale speed sensors directly couple to non-driven rotating shaft on the conveyor. These speed sensors submit an output signal at a frequency directly proportional to the shaft speed. This frequency is sent to the 6101T Belt Scale Integrator which takes the speed and the load cell mV signals and converts them into a rate.

The N-60, N-60B, N-60M and N-60X belt scale speed sensors not only work in conjunction with the Bulk Pro Systems, LLC belt scales, they are a direct replacement for the Thermo Ramsey belt scale speed sensors.

The **Model N-60** belt scale speed sensor operates at 50 pulses per revolution. It is the most widely used of the three (3) types in the Bulk Pro Systems belt scale speed sensors. The **Model N-60M** uses a M16 Metric coupling in lieu of the UNC.

The **Model N-60X** belt scale speed sensor is the CSA (cCSAus) approved unit. It also operates at 50 pulses per revolution. Along with CSA Approval, the N-60X is approved to be installed in Class II, Div. 1 & 2, Groups E, F & G hazardous locations.

The **Model N-60B** belt scale speed sensor uses an encoder versus a stepper motor which operates at 600 pulses per revolution. It is designed to be used on low and very low speed conveyors and feeders.

All three versions are dimensionally identical. They come with all the required mounting apparatus including an anti-rotation arm, 5/8"-11UNC coupling, spring and hardware.

SPECIFICATIONS

Model N-60, N-60B, N-60M & N-60X Belt Scale Speed Sensors

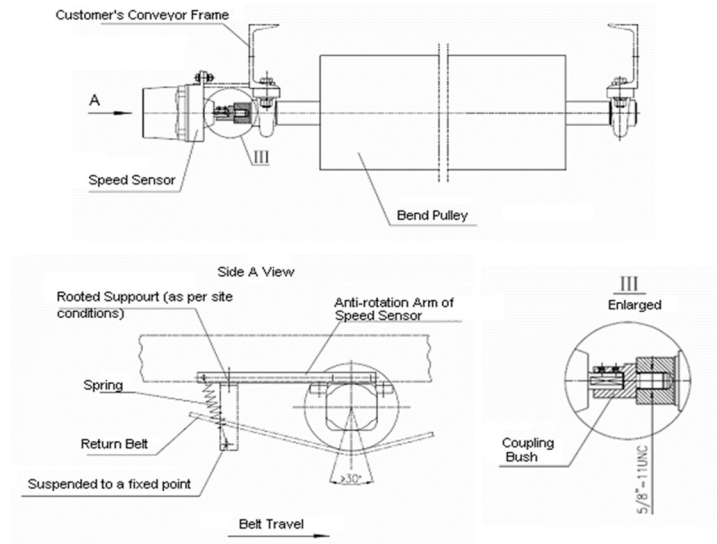
- Rugged die cast aluminum enclosure
- NEMA-4, IP-65
- Yellow epoxy based powder coat paint finish
- Two (2) mounting holes
- Ambient Temperature: -30° to 80° C (-22° -176° F)
- Conduit Entry: one (1), 1/2"-14 NPT
- Signal generator stepper motor
- 4V peak-peak
- 50 Pulses per revolution standard
- 304 stainless steel shaft
- Model N-60B Encoder version, 600 PPR
- Model N-60X cCSAus Approved for Class II, Div. 1 & 2, Groups E, F & G hazardous areas
- Model N-60M with M16-1.5 metric coupling



Applicable Requirements Model N-60X

CSA Std. C22.2 No. 0-M91
CSA Std. C22.2 No. 0.5-1982
CSA Std. C22.2 No. 142-M1987
CSA Std. c22.2 No. 25-1986
CSA Std. C22.2 Np. 30-M1986

Mounting



Parts Provided with Sensors:

- Anti rotation arm
- 5/8"-11UNC Coupling
- **Optional:** Metric M16-1.5 Coupling (N-60M)
- Spring
- Mounting hardware

All Dimensions in Inches (Millimeters)

